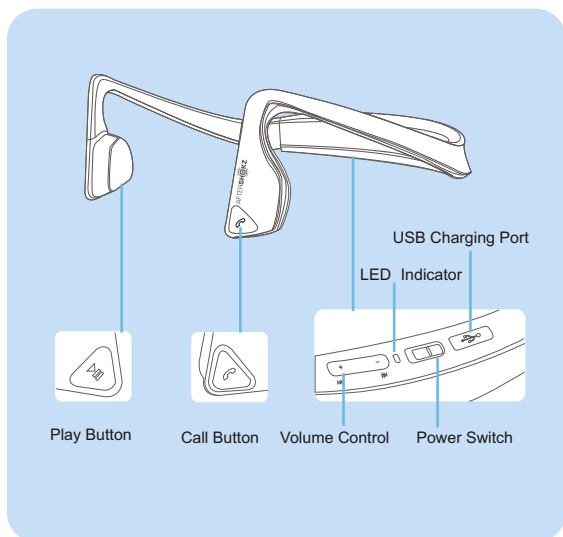


# BLUEZ Bone Conduction Headset

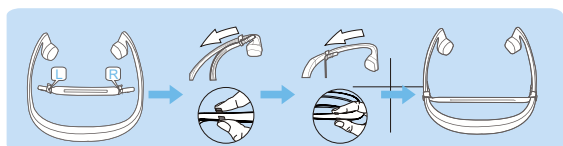
Keep ears open, be aware of surroundings

## Part description



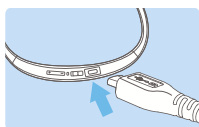
**Note:**

The adjustable (and removeable) **Tension Band** on Bluez is recommended for those who have a small head or feel Bluez is not secure on their head. Adjust to fit or remove the **Tension Band** as needed.



## How to charge


Connect Bluez to a standard USB port on your PC or a wall charger via the USB charging cable. Bluez will fully charge in 3 hours. The LED Indicator will show solid red when charging, and will turn solid blue when charging is completed.



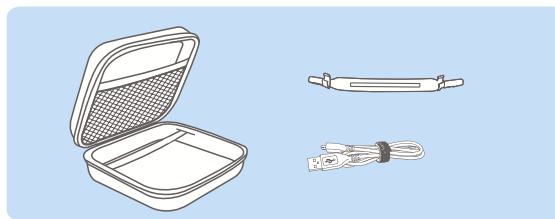
**Note:**

It's recommended to charge Bluez before using for the first time. Bluez is not functional while charging.

## How to pair

- Slide the **Power Switch**  on Bluez to the "ON" position.(green)
- Locate the Bluetooth menu on the device and select "AfterShokz" .
  - If Bluez is pairing with a device for the first time, it will enter the pairing mode automatically. The LED indicator will flash blue/red.
  - Bluez will automatically reconnect with a device that was previously paired in approximately 5 seconds. The LED indicator will be flash blue.

## Accessories



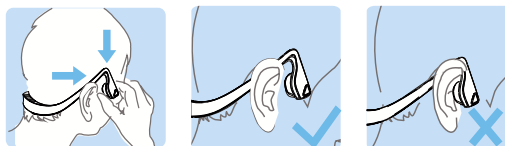
Item	Quantity
USB to micro USB Charging Cable	1
Tension Band (with instruction sheet)	1
Warranty Registration Card	1


## Features

- ▶ Open Ear design to keep aware of surroundings.
- ▶ Stereo Bluetooth headset with wireless phone and music functions
- ▶ More comfortable and stable for extended use.

## How to wear

Place the wraparound head band behind your neck with the transducers resting on the bone in front of your ears, not on your ears.



- To pair with another phone or re-pair with a device, press the **Play Button**  and hold for 18 seconds to enter manual pairing. The LED indication will flash quickly blue/red.

**Note:**

If out of range while connected to a device (more than 33 feet/10 meters), Bluez will disconnect from the device. Once Bluez is back within range, it will automatically reconnect. However, if Bluez is disconnected

for a long time (more than 3 minutes), you may need to press any button on the headset, to reconnect the device.

If the device is turned off while connected to Bluez, Bluez will disconnect from it. When you turn on the device again, just press any button on Bluez to reconnect manually.

## LED indication

Color	Status
Red(quick flash)	Low battery
Red(solid)	Charging
Blue(solid)	Charging complete
Red(quick flash four times when shutting down Bluez)	Less than 2 hours working time
Blue and Red(flash)	Pairing
Blue(quick double flash)	Discoverable for pairing
Blue(slow double flash)	Bluez and a paired mobile phone are not connected. One of them is not turned on, or the two are more than 33 feet (10m) apart.
Blue(slow flash)	Connected, making a call, streaming audio
Blue(quick flash)	Receiving a call